

# MTB Grade 4

## Euphonium and Baritone

### Section One: Recital (60 marks)

#### Select three pieces from the following list (20 marks each)

As an alternative to the pieces below, candidates may perform up to 3 free choice pieces.

For guidance on selecting and approving free choice pieces please [click here](#).

Please Note: It has been assumed that Euphonium or Baritone candidates will be treble clef readers. The pieces listed below are all published in the treble clef. They may or may not also be available in the bass clef. Candidates may also choose to play any pieces from the recital section of the trumpet or trombone syllabus depending on which clef is appropriate.

| Composer/Artist       | Title                                       | Book/Cat. Ref                                 | Publisher/Buy from                                   |
|-----------------------|---|---|--|
| Pickett Wilson        | The Commitments: Midnight Hour              | Tomplay                                       | <a href="https://tomplay.com">tomplay.com</a>        |
| James Horner          | Theme from Titanic                          | Tomplay                                       | <a href="https://tomplay.com">tomplay.com</a>        |
| Ellington             | Caravan                                     | Tomplay                                       | <a href="https://tomplay.com">tomplay.com</a>        |
| Monk                  | Blue Monk                                   | Tomplay                                       | <a href="https://tomplay.com">tomplay.com</a>        |
| Traditional           | A La Nanita Nana                            | Tomplay                                       | <a href="https://tomplay.com">tomplay.com</a>        |
| Saint-Saëns           | The Elephant                                | Tomplay                                       | <a href="https://tomplay.com">tomplay.com</a>        |
| Hook/ P. Wastall      | Sonata No.1 1 <sup>st</sup> Movt: Andantino | Two Sonatas                                   | Boosey & Hawkes                                      |
| Barry                 | Mr Kiss Kiss Bang Bang (CD or piano acc.)   | James Bond 007                                | Alfred IFM0033CD (Acc. published separately IFM0031) |
| Acker Bilk            | Stranger on the Shore                       | Stranger on the A Train (treble clef version) | Brass Wind   |
| Saint Saens           | L'Elephant                                  | Savoir Faire                                  | Brass Wind   |
| Mandel/ Francis       | The Shadow of Your Smile                    | Big Chillers (treble clef)                    | Brass Wind   |
| Kurt Weill            | Mack the Knife                              | Big Chillers (treble clef)                    | Brass Wind   |
| Barry                 | Diamonds Are Forever (CD or piano acc.)     | James Bond 007                                | Alfred IFM0033CD (Acc. published separately IFM0031) |
| Mozart/ Sparke        | Adagio (No.15)                              | Skilful Solos                                 | Anglo Music  |
| Schubert/ Sparke      | Marche Militaire (No.16)                    | Skilful Solos                                 | Anglo Music  |
| Ellington & Strayhorn | Satin Doll                                  | Take Ten                                      | UE19779  |
| Wedgwood              | Walk Tall                                   | Jazzin' About                                 | Faber  |

Tomplay pieces often include accompaniments and can be purchased individually using the link next to each piece or via a discounted subscription for MTB teachers/learners. To learn more about Tomplay and the subscription [click here](#).

# MTB Grade 4 Euphonium and Baritone

| Composer/Artist            | Title  | Book/Cat. Ref                        | Publisher/Buy from                                     |
|----------------------------|--|--------------------------------------|--|
| Verdi/Hare                 | Chorus of the Hebrew Slaves                  | The Magic Trumpet                    | Boosey & Hawkes MDS                                    |
| Morross                    | The Big Country                              | Some might Say Prokofiev             | Brass Wind   |
| Williams                   | May the Force Be With You (CD or piano acc.) | The Very Best of John Williams       | Alfred IFM0422CD (Acc. published separately IFM0425CD) |
| Walsh & Shore              | In Dreams (CD or piano acc.)                 | The Lord of the Rings                | Alfred IFM0408CD (Acc. published separately IFM0411CD) |
| Tchaikovsky                | Mélodie Antique                              | First Book of Trumpet Solos          | Faber  |
| Tchaikovsky                | Française                                    | First Book of Trumpet Solos          | Faber  |
| Arban                      | Arban's Romp                                 | First Book of Trumpet Solos          | Faber  |
| Goodwin                    | 633 Squadron                                 | Great Winners                        | Brass Wind   |
| Bernstein                  | Somewhere                                    | Great Winners                        | Brass Wind   |
| Jacob                      | Alla Menuetto (No.4)                         | Four Little Pieces                   | Emerson  |
| Telemann<br>(Wastall/Hyde) | Allegro (2nd Movement)                       | Suite No. 1                          | Boosey & Hawkes  |
| Sparke                     | Shepherd's Song                              | Skilful Studies                      | Anglo Music  |
| Sparke                     | Penny Parade                                 | Skilful Studies                      | Anglo Music  |
| Rob Hudson                 | Even So (No.11)                              | 30 Modern Studies for Trumpet        | UE 21316   |
| Rob Hudson                 | Swingin' (No.12)                             | 30 Modern Studies for Trumpet        | UE 21316   |
| Endresen                   | No.17  | Supplementary Studies                | Rubank   |
| Hering                     | No.15  | Forty Progressive Etudes for Trumpet | Fischer  |
| Mark Nightingale           | Blues for Big Ears (No.15)                   | Eazy Jazzy 'Tudes                    | Warwick Music  |
| Clarke                     | Weldon                                       | Featuring Rhythm                     | Brass Wind   |
| Clarke                     | Polish Dance                                 | Featuring Rhythm                     | Brass Wind   |

## Section Two: Technical (25 marks)

Prepare either option 1 or 2 below

### Technical Option 1

#### Technical Exercises:

Perform all the technical exercises required for this grade

[Pages 4 & 5](#)

**PLUS**

#### Scales from Memory:

Perform the scales from memory required for this grade from the sheet

[Pages 6 & 7](#)

### Technical Option 2

#### Technical Exercises:

Perform all the technical exercises required for this grade

[Pages 4 & 5](#)

**PLUS**

#### Alternative to Scales from Memory:

Perform the alternative to scales from memory required for this grade from the

[Pages 8 & 9](#)

## Section Three: Musicianship (15 marks)

Prepare either option 1 or 2 below

### Musicianship Option 1

#### Reading Skills:

Perform the rhythm exercises for this grade

[Page 12](#)

**PLUS**

#### Listening Skills:

Sing the prepared aural tests for this grade

[Page 13](#)

### Musicianship Option 2

#### Reading Skills:

Perform the rhythm exercises for this grade

[Page 12](#)

**PLUS**

#### Duet:

Perform the duet for this grade

[Pages 10 & 11](#)

# Technical Exercises

Exercise 1 (for tone) ♩=c60

Exercise 2 - (for speed and control of articulation) ♩=104+

Exercise 3 - Lip slurs ♩=c116

Exercise 4 - (for chromatics fingering) ♩=80+

# Technical Exercises

Exercise 1 (for tone) ♩=c60

Exercise 2 - (for speed and control of articulation) ♩=108+

Exercise 3 - Lip slurs ♩=c116

Exercise 4 - (for chromatics fingering) ♩=80+

# Scales & Arpeggios from Memory

For the examination, the candidate should be asked to perform all the following scales and arpeggios from memory. They should perform each scale and arpeggio either tongued or slurred as requested by the teacher. The teacher should aim for an even distribution of articulations.

Scales ♩=72 Arpeggios triplet ♩=100

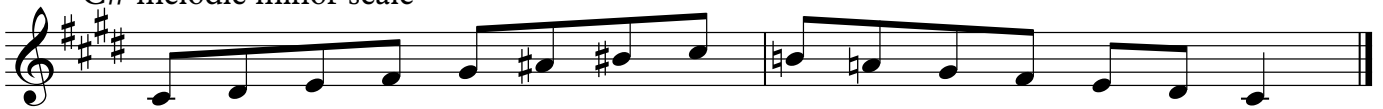
E♭ major scale



F major scale



C# melodic minor scale



E harmonic minor scale



E♭ major arpeggio



F major arpeggio



C# minor arpeggio



E minor arpeggio

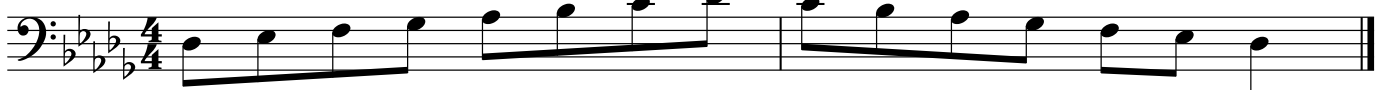


## Scales & Arpeggios from Memory

For the examination, the candidate should be asked to perform all the following scales and arpeggios from memory. They should perform each scale and arpeggio either tongued or slurred as requested by the teacher. The teacher should aim for an even distribution of articulations.

Scales ♩=72 Arpeggios triplet ♩=100

Db major scale



Eb major scale



B melodic minor scale



D harmonic minor scale



Db major arpeggio



Eb major arpeggio



B minor arpeggio



D minor arpeggio



# Alternative to Scales from Memory

The following do not need to be played from memory  
For the examination perform all the following

Scales ♩=72 Arpeggios triplet ♩=100

Eb major scale



Eb major scale with rhythmic pattern



F major scale



C# melodic minor scale



E harmonic minor scale



Eb major arpeggio



F major arpeggio



C# minor arpeggio



E minor arpeggio





# Alternative to Scales from Memory

The following do not need to be played from memory  
For the examination perform *all* the following

Scales ♩=72 Arpeggios triplet ♩=100

Db major scale

Db major scale with rhythmic pattern

Eb major scale

B melodic minor scale

D harmonic minor scale

Db major arpeggio

Eb major arpeggio

B minor arpeggio

D minor arpeggio

1 (Candidate)

**Duet**[Click here to find exam speed duet recordings](#)[Click here to find practice speed duet recordings](#)

2

\*Musicianship Duets on the MTB Syllabuses are not acceptable for use as Recital pieces for the same grade. Musicianship Duets are Listening Skills, not another piece and consequently are set at a more straightforward technical level.

**Cup Final**

1 **Excitedly!**

6

11

14

*f*

*ff*

*ff*

1 (Candidate)

[Click here to find  
exam speed duet  
recordings](#)
[Click here to find  
practice speed  
duet recordings](#)

2

## Duet

\*Musicianship Duets on the MTB Syllabuses are not acceptable for use as Recital pieces for the same grade. Musicianship Duets are Listening Skills, not another piece and consequently are set at a more straightforward technical level.

### Cup Final

Excitedly!

The musical score for 'Cup Final' is written in Bass Clef, 4/4 time, and the key of B-flat major. It consists of two staves, each with two parts. The first part of each staff begins with a forte (*f*) dynamic. The second part of each staff begins with a fortissimo (*ff*) dynamic. The music is marked 'Excitedly!' and features various rhythmic patterns, including eighth and sixteenth notes, and rests.

## Reading Skills

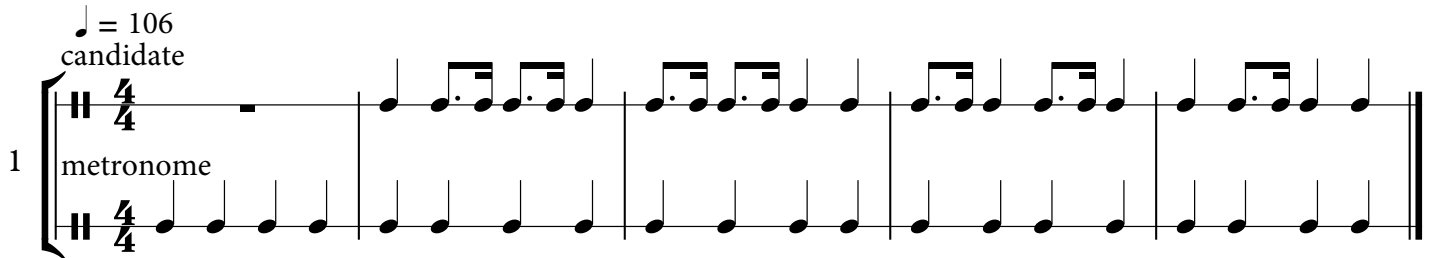
Candidates should practise the six clapping exercises below as part of their preparation to take this grade.

For the exam itself, the candidate should perform all six exercises in the order below at the indicated tempi. The candidate part should be clapped and the lower part should be provided using either the MTB Reading Skills recording for this grade, which can be downloaded [here](#), or a metronome (not clapped).

1

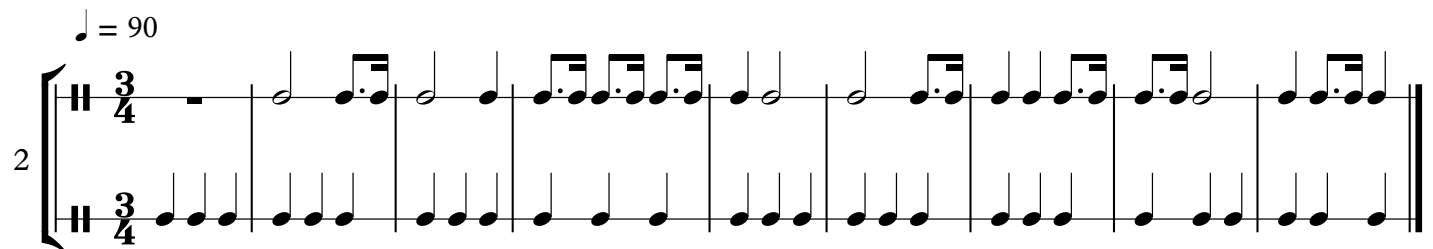
♩ = 106  
candidate

metronome



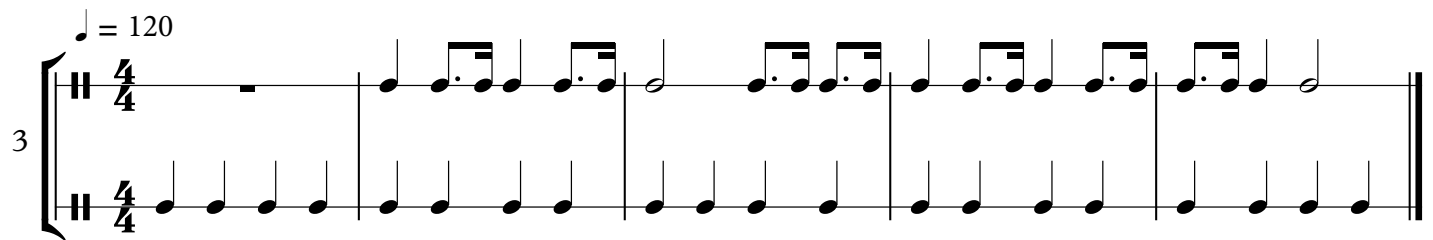
2

♩ = 90



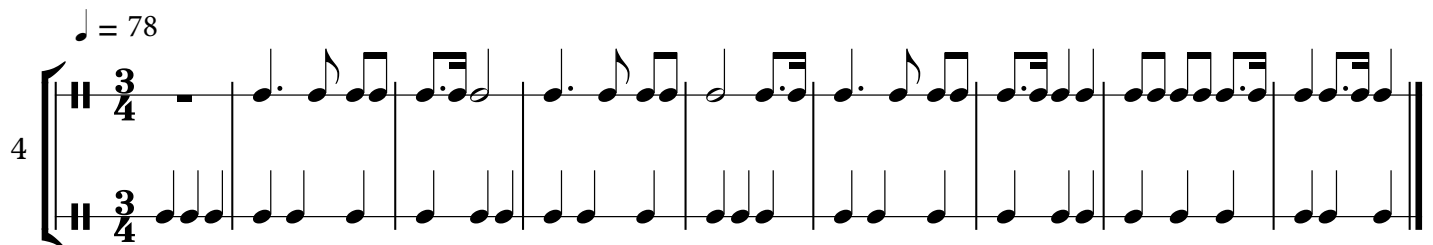
3

♩ = 120



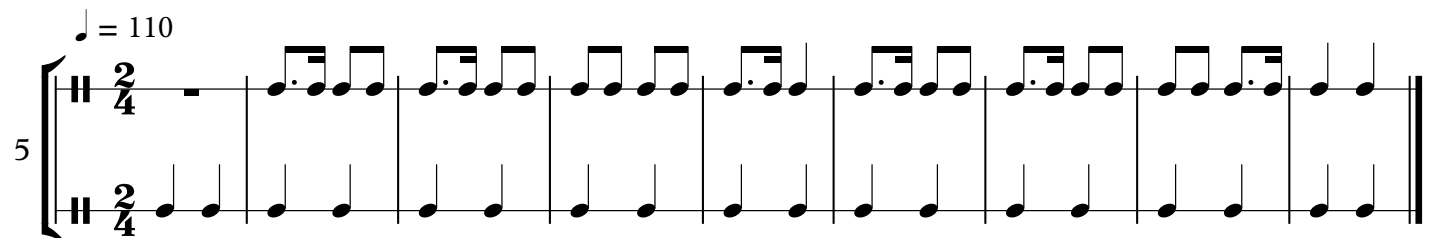
4

♩ = 78



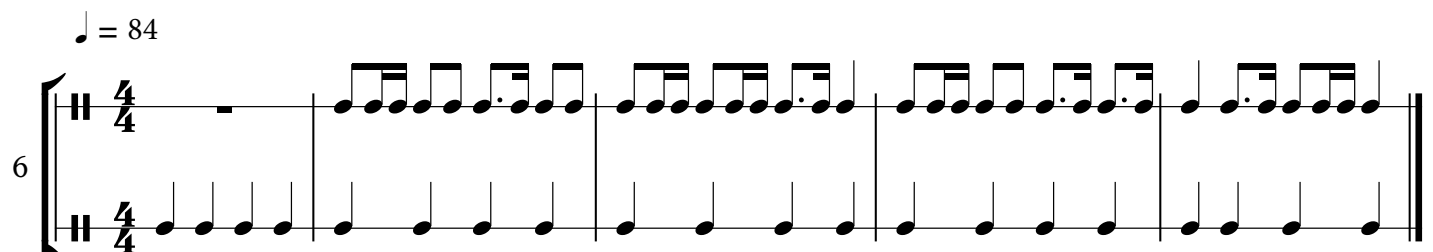
5

♩ = 110



6

♩ = 84



# Listening Skills

(Aural tests)

The candidate should practise all the exercises on this sheet with the accompanying Listening Skills recording as part of their preparation for the exam. The exam can be conducted either with the candidate responding to the recording or the teacher can deliver them using this sheet.

Only the teacher should have this sheet in front of them during the exam.

For each test, select *either* the treble *or* the bass clef exercises as appropriate to the range of the candidate's voice.

Test 1 - Singing back notes.

I shall play a 3 note chord, and then you shall sing back both the highes and lowest notes.

We shall do this with 4 different chords.

Treble Clef

1. 2. 3. 4.

Bass Clef

1. 2. 3. 4.

Test 2 - Intervals.

I will play a note and ask you to sing a specific interval above. We shall do this for 3 different intervals.

Treble Clef

1. Major 6th 2. Major 3rd 3. Perfect 4th

Bass Clef

1. Major 6th 2. Major 3rd 3. Perfect 4th

Test 3 - Singing back melodic phrases.

I shall play a melodic phrase **twice**, and then you shall sing it back. We shall do this for 3 different melodies.

Before each, I will indicate the pulse.

Treble Clef

1.

2.

3.

Bass Clef

1.

2.

3.