

Scales & Arpeggios from Memory

For the examination, the candidate should be asked to perform the nine starred (**) scales and arpeggios below plus any other two items from memory. They should perform each scale and arpeggio either tongued or slurred as requested by the teacher. The teacher should aim for an even distribution of articulations. All tempi given are minimum speeds.

♩=120

** Ab major scale - 2 octaves



F# major scale - 12th



E major scale - 1 octave down to dominant, resolve onto the tonic



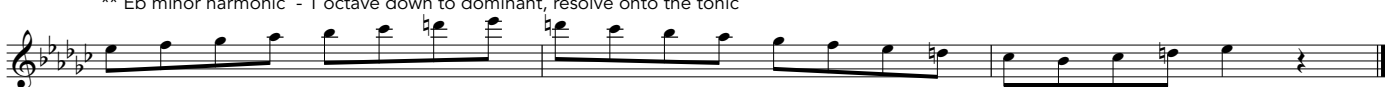
Bb minor harmonic - 12th



** G# minor melodic - 12th



** Eb minor harmonic - 1 octave down to dominant, resolve onto the tonic



♩=60

** F chromatic scale - 12th

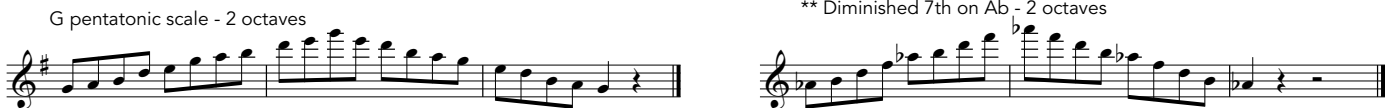


** Bb major scale in thirds - 12th



♩=114

** Diminished 7th on Ab - 2 octaves



** Dominant 7th in C - 2 octaves



Dominant 7th in Eb - 12th



♩=76

Ab major arpeggio - 2 octaves



** F# major arpeggio - 12th



E major arpeggio - 1 octave



Bb minor arpeggio - 12th



** G# minor arpeggio - 12th



Eb minor arpeggio - 12th

