

## Section One: Recital (60 marks)

### Select **three** pieces from the following list (20 marks each)

If you are using a Keyboard that is not touch sensitive, it is important to use other means to replace dynamics such as different voicing. For Keyboards with a shorter range, scales and exercises may be transposed down/up an octave. In pieces with limited or no given registrations, tempo markings, dynamics, voice/fill markings, etc. the candidate must select these as part of their interpretation so as to produce a musically rewarding performance and exploit the potential of their keyboard. Two versions of the same song, with different LH variations may appear. In this event, you may select only **one** version of the song.

As an alternative to the pieces below, candidates may perform up to 3 free choice pieces. For guidance on selecting and approving free choice pieces please [click here](#)

Composer/Artist	Title	Book/Cat. Ref	Publisher/ Buy Here
<b>Pieces aimed at using the Keyboard as a Piano</b>			
Please be aware not all pieces will be suitable for a Keyboard with a shorter range. It is acceptable to adapt pieces with octave transpositions. For Keyboards that are not touch sensitive other means need to be used to replace dynamics, as listed above.			
Haydn	Sonata No.4 in G major Hob XVI:G1 : Finale : Presto	Tomplay	<a href="http://tomplay.com">tomplay.com</a> or Any reliable edition
Beethoven	Sonata in G Op.79 : Finale : Vivace	Tomplay	<a href="http://tomplay.com">tomplay.com</a> or Any reliable edition
Chopin	Nocturne in G minor Op.15 no.3	Tomplay	<a href="http://tomplay.com">tomplay.com</a> or Any reliable edition
Morricone/ Weston	Chi Mai	Tomplay	<a href="http://tomplay.com">tomplay.com</a>
Nina Simone or Donaldson	My Baby Just Cares for Me	SMD Cat Ref: 47723 or Great Piano Solos Black	<a href="http://sheetmusicdirect.com">sheetmusicdirect.com</a> or Wise
Mozart	Rondo Alla Turca K.331	SMD Cat Ref: 21561	<a href="http://sheetmusicdirect.com">sheetmusicdirect.com</a> or Any reliable edition
Flaherty /Keveren	Once upon a December	SMD Cat Ref: 429719	<a href="http://sheetmusicdirect.com">sheetmusicdirect.com</a>
Nyman	Big My Secret	SMD Cat Ref: 23615 or The Piano	<a href="http://sheetmusicdirect.com">sheetmusicdirect.com</a> or Any reliable edition
John Coltrane	My Favourite Things	SMD Cat Ref: 99564	<a href="http://sheetmusicdirect.com">sheetmusicdirect.com</a>
J. Hisaishi	Howl's Moving Castle	SMD Cat Ref: 106636	<a href="http://sheetmusicdirect.com">sheetmusicdirect.com</a>
Ludwig van Beethoven	Sonata in C# minor Op.27 no.2 1 <sup>st</sup> Movt: Adagio Sostenuto	MTB Piano Book Grade 7	<a href="#">MTB Bookshop</a>

Tomplay pieces often include accompaniments and can be purchased individually using the link next to each piece or via a discounted subscription for MTB teachers/learners. To learn more about Tomplay and the subscription [click here](#).

# MTB Grade 7 Keyboard

Composer/Artist	Title	Book/Cat. Ref	Publisher/ Buy Here
Claude Debussy	Reverie	MTB Piano Book Grade 7	<a href="#">MTB Bookshop</a>
Moritz Moszkowski	Tarantella	MTB Piano Book Grade 7	<a href="#">MTB Bookshop</a>
Domenico Scarlatti	Sonata in C K159	MTB Piano Book Grade 7	<a href="#">MTB Bookshop</a>
Ludwig Schytte	Nocturne	MTB Piano Book Grade 7	<a href="#">MTB Bookshop</a>
Johann Friedrich Burgmuller	Rondo alla Turca	MTB Piano Book Grade 7	<a href="#">MTB Bookshop</a>
Hamilton	Cry Me a River	Great Piano Solos Purple	Wise
John Barry	Goldfinger	Great Piano Solos Purple	Wise
Beethoven	Sonata in G Op.79 3 <sup>rd</sup> Movt: Vivace	N/A	Any reliable edition
Kabalevsky	Sonatina in C Op.13 1 <sup>st</sup> or 3 <sup>rd</sup> Movt: Presto	N/A	Boosey and Hawkes or any reliable edition
Florence Price	Silk Hat and Walking Cane	Piano Music of Africa and the African Diaspora Vol 2	OUP
Wallace McClain Cheatham	Prelude No. 2 " Poor Mourner's Got A Home"	Piano Music of Africa and the African Diaspora Vol 2	OUP
Khatchaturian	Sonatina in C 1 <sup>st</sup> Movt: Allegro	N/A	Edition Peters
Leighton	Sonatina no.2 2 <sup>nd</sup> Movt: Andante Sostenuto	N/A	Legnick
Fibich	Poème Op.41 no.6	The original version found via the link should be used.	<a href="http://www.sheetmusicplus.com">www.sheetmusicplus.com</a>
Heller	Epilogue Op.45 no.25	N/A	Any reliable edition
Ligeti	Musica Ricercata No.7	N/A	Schott
Taylor	I Wish I Knew How it Felt to be Free	Great Piano Solos Black	Wise

## Section Two: Technical (25 marks)

### Technical: Keyboard as Piano

#### Technical Exercises:

Perform all the technical exercises required for this grade

[Page 4](#)

**PLUS**

#### Scales from Memory:

Perform all scales from memory required for this grade from the sheet

[Page 6](#)

## Section Three: Musicianship (15 marks)

Prepare either option 1 or 2 below

### Musicianship Option 1

#### Reading Skills:

Perform the rhythm exercises for this grade

[Page 11](#)

**PLUS**

#### Listening Skills:

Sing the prepared aural tests for this grade

[Page 13](#)

### Musicianship Option 2

#### Reading Skills:

Perform the rhythm exercises for this grade

[Page 11](#)

**PLUS**

#### Duet:

Perform the duet for this grade

[Page 9](#)

# Technical Exercises

## Exercise 1

C.L. Hanon

(from The Virtuoso Pianist)

$\text{♩} = 88$  Hands together

1

5

6

12

17

21

25

Exercise 2

$\text{♩} = 92$  Hands together

Musical notation for Exercise 2, measures 1-3. The piece is in common time (C) and begins with a treble clef. The bass clef part features a descending eighth-note scale with fingering 3 2 1. The treble clef part is empty.

Musical notation for Exercise 2, measures 4-7. Measure 4 starts with a treble clef. The bass clef part continues the descending eighth-note scale with fingering 3 2 1 3 2 1. The treble clef part has a descending eighth-note scale starting in measure 4.

Musical notation for Exercise 2, measures 8-10. The treble clef part continues the descending eighth-note scale. The bass clef part has a descending eighth-note scale starting in measure 8.

Musical notation for Exercise 2, measures 11-13. The treble clef part continues the descending eighth-note scale. The bass clef part has a descending eighth-note scale starting in measure 11.

Musical notation for Exercise 2, measures 14-16. The treble clef part continues the descending eighth-note scale. The bass clef part has a descending eighth-note scale starting in measure 14.

# Scales from Memory

All scales and arpeggios to be played hands together legato/staccato/crescendo-diminuendo at the teacher's choice ♩ = 80

## Scales

B major, three octaves, hands together

Musical notation for B major scale, three octaves, hands together. The treble clef starts on B4 and the bass clef starts on B2. Fingerings are indicated by numbers 1-4 above or below notes.

G# harmonic minor, three octaves, hands together

Musical notation for G# harmonic minor scale, three octaves, hands together. The treble clef starts on G#4 and the bass clef starts on G#2. The natural 7th degree (F#) is marked with an 'x' in both hands.

G# melodic minor, three octaves, hands together

Musical notation for G# melodic minor scale, three octaves, hands together. The treble clef starts on G#4 and the bass clef starts on G#2. The 6th degree (F#) is marked with an 'x' in both hands.

C major, three octaves, hands a 3rd apart

Musical notation for C major scale, three octaves, hands a 3rd apart. The treble clef starts on C4 and the bass clef starts on C2. Fingerings are indicated by numbers 1-5.

### Double Thirds

C major, two octaves, hands separately, legato

### Chromatic Scale

Starting on any note, three octaves, hands together

Ascending: right hand legato/left hand staccato

Descending: right hand staccato/left hand legato

### Arpeggios

G# minor, hands together, three octaves

Root position

First inversion

Second inversion

Dominant 7th in the key of C, three octaves, hands together

Musical score for Dominant 7th in the key of C, three octaves, hands together. The score is in 4/4 time and consists of two staves. The right hand starts on C4 and moves up to C7, while the left hand starts on C3 and moves up to C6. The exercise is divided into four measures, each containing a sequence of notes with fingerings: 1-2-3-4, 1-2-3-4, 5-4-3-2, and 1-4-3-2. The final measure ends with a whole note chord (C4, E4, G4, Bb4) in both hands.

Dominant 7th in the key of Ab, three octaves, hands together

Musical score for Dominant 7th in the key of Ab, three octaves, hands together. The score is in 4/4 time and consists of two staves. The right hand starts on Ab3 and moves up to Ab7, while the left hand starts on Ab2 and moves up to Ab6. The exercise is divided into four measures, each containing a sequence of notes with fingerings: 2-1-2-3, 4-1-2-3, 4-3-2-1, and 4-3-2-1. The final measure ends with a whole note chord (Ab3, Cb4, Eb4, Gb4) in both hands.

"Nice cup of tea" 2s against 3s exercise 1

Musical score for "Nice cup of tea" 2s against 3s exercise 1. The tempo is marked as ♩ = 60. The score is in 4/4 time and consists of two staves. The right hand plays a sequence of eighth notes with a fingering of 1. The left hand plays a sequence of eighth notes with a fingering of 3. The exercise is divided into four measures, each containing a sequence of notes with fingerings: 1, 3, 3, 3. The final measure ends with a whole note chord (C4, E4, G4, Bb4) in both hands.

"Nice cup of tea" 2s against 3s exercise 2

Musical score for "Nice cup of tea" 2s against 3s exercise 2. The tempo is marked as ♩ = 60. The score is in 4/4 time and consists of two staves. The right hand plays a sequence of eighth notes with a fingering of 3. The left hand plays a sequence of eighth notes with a fingering of 3. The exercise is divided into four measures, each containing a sequence of notes with fingerings: 3, 3, 3, 3. The final measure ends with a whole note chord (C4, E4, G4, Bb4) in both hands.



# Sicilian Hunting Song

The Teacher part should be played on a Piano, or the candidate may use the recordings provided

Allegro ♩ = 152

TEACHER

Ottorino Respighi (1879-1936)

5

10

14

19

23 *affretando*

*f*

*f*

*dim.*

*p*

# Sicilian Hunting Song

Allegro ♩ = 152

PUPIL

Ottorino Respighi (1879-1936)

8<sup>va</sup>

5 (8<sup>va</sup>)

9 (8<sup>va</sup>)

13 (8<sup>va</sup>)

18

23 (8<sup>va</sup>)

# Tgcf lpi 'Unknu

Candidates should practise the six clapping exercises below as part of their preparation to take this grade.

For the exam itself, the candidate should perform all six exercises in the order below at the indicated tempi. The candidate part should be clapped and the lower part should be provided using either the MTB Reading Skills recording for this grade or a metronome (not clapped).

♩ = 140

1 candidate

metronome

♩ = 120

2

♩ = 104

3

♩ = 90

4

3 3 3 3 3

3 3 3 3 3

♩ = 106

5

3 3 3 3 3 3 3 3

♩ = 86

6

3 3

3 3

# Listening Skills

## (Aural tests)

The candidate should practise all the exercises on this sheet with the accompanying Listening Skills recording as part of their preparation for the exam. The exam can be conducted either with the candidate responding to the recording or the teacher can deliver them using this sheet.

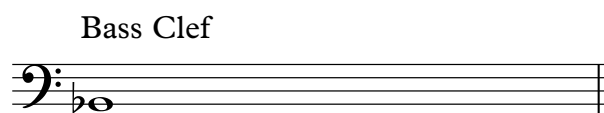
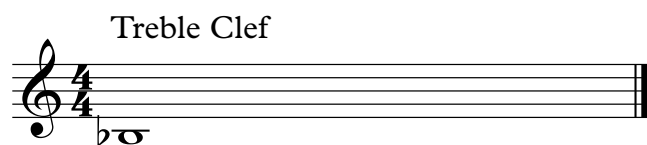
Only the teacher should have this sheet in front of them during the exam.

For each test, select *either* the treble *or* the bass clef exercises as appropriate to the range of the candidate's voice.

### Test 1 - Scales.

I shall ask you to sing an ascending major scale, after I give you the starting note.

And then I shall ask you to sing an ascending harmonic minor scale, after I give you the same starting note again.



### Test 2 - Singing back notes

I shall play a 3 note chord and then you will sing back the highest, middle, then lowest notes.

We shall do this for 4 chords.



### Test 3 - Dominant & Diminished 7ths

I shall ask you to sing the first 4 notes of an ascending dominant 7th arpeggio in root position after giving you the starting note.

I shall then ask you to sing the first 4 notes of an ascending diminished 7th arpeggio after giving you the same starting note again.

